

## MBPCX 20 T2 0,25kW Zone 2: FAN (Ex h IIB T4 Gc) + MOTOR (Ex db IIC T4 Gb) (502302014XD)

### GENERAL DATA



PLASTIC ATEX FAN WITH FORWARD IMPELLER

#### MANUFACTURING FEATURES

- Housing made of PP-el plastic (for models size 35 and equal to or greater than size 45) other models PE-el casing
- Forward curved impeller in PP plastic.
- Motor support made of rolled steel sheet with polyester powder finishing coat.
- Stainless steel nuts and bolts.
- Standard asynchronous squirrel-cage motor, IP-55, class F insulation. Standard voltages 230/400V 50Hz for three phase motors up to 4kW and 400/690V 50Hz for higher powers. Equipped with ATEX motors

- Available positions (to be indicated in case of order): LG270, LG0, LG45, LG90, LG135, LG180, LG225, LG315, RD0, RD45, RD90, RD135, RD180, RD225, RD270, RD315.
- The indicated codes correspond to the model in position LG270

#### APPLICATIONS

Designed for inline installation, they are suitable for:

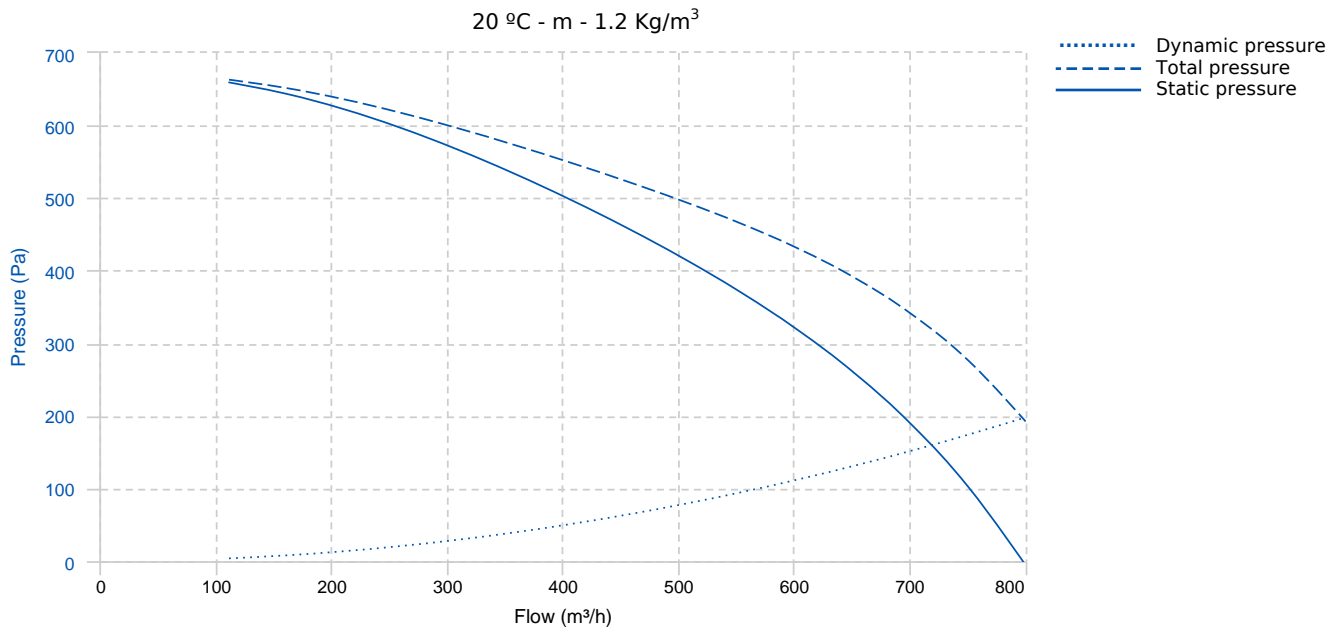
- Corrosive air transport.
- Chemical and petrochemical industry.
- Laboratories and gas cabinets.
- General ventilation in closed environments classified as ATEX zone 2.
- Maximum temperature of transported air: If it is clean air 70°C, other depends on the gas (see table in documentation)

#### UNDER REQUEST

- 60Hz fans and special voltages fans.
- Stainless steel motor support.

In compliance with the ATEX Directive 2014/34/UE. Certified ATEX IIIG with certified ATEX motor for areas 2 (gas)

## PERFORMANCE CURVE



## TECHNICAL DATA

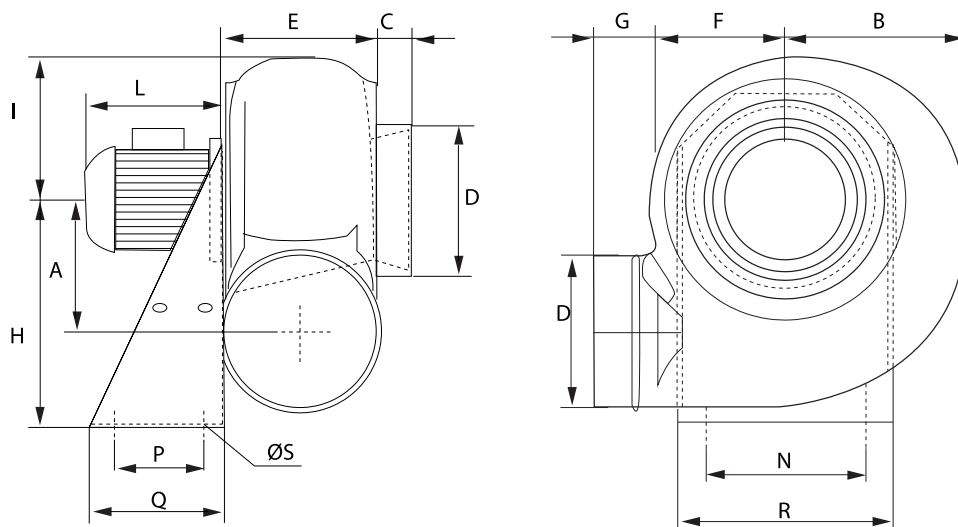
### Fan

RPM	2750	Approx. weight	18 kg	Max. Flow	800 m³/h
-----	------	----------------	-------	-----------	----------

### Motor

Power	0,25 kW	RPM	2750	I max. (400V)	0,74 A	Size	63
Approx. weight	4 kg	Efficiency (%)	60 %	FP	0.83		

## DIMENSIONS

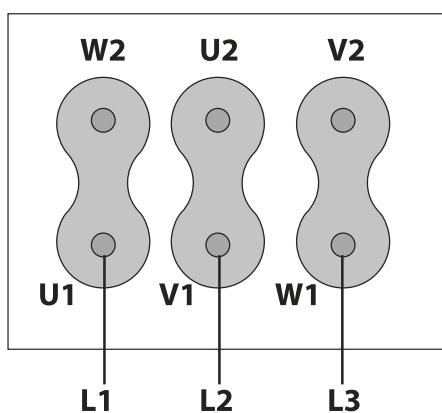


### Dimensions (mm)

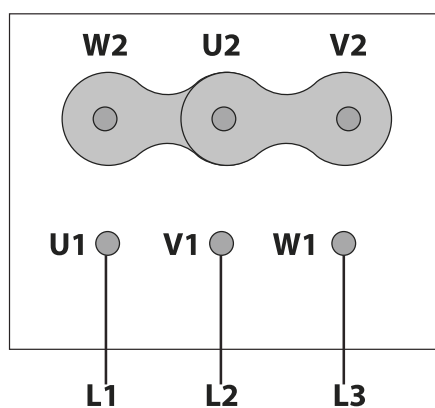
A	142	B	187	C	40	DØ	125	E	120
F	150	G	60	H	250	I	165	L	195
N	200	P	100	Q	140	R	235	ØS	11

### WIRING DIAGRAM

230V



400V



## ACCESSORIES



**ANTI-VIBRATING FLANGE 400°/2H  
BA-400 10/12**  
REF: 960002068



**ATEX SWITCH  
INT 16 ATEX**  
REF: 510200016X



**DIFUSOR GRID  
DG Ø125**  
REF: DG125



**DRAIN PLUG  
PD 1**  
REF: PD1



**WALL SUPPORT  
WS 1**  
REF: WS1



**FREQUENCY SPEED CONTROLLER  
SFC 230 I 2,5A \***  
REF: SFC230I003



**ANTI-VIBRATION RUBBER BLOCK  
AVR (GENERIC)**



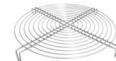
**ANTI-VIBRATION JOINT  
JE 45**  
REF: A-300719201



**PVC FLEXIBLE JOINT  
FJ Ø125**  
REF: FJ-125



**CIRCULAR GRAVITY DAMPER  
CSC Ø125**  
REF: CSC125



**STAINLESS STEEL PROTECTION GRID  
RPI Ø125**  
REF: RPI125



**ANTI-VITRATION BLOCK  
AV 1**  
REF: AV-1

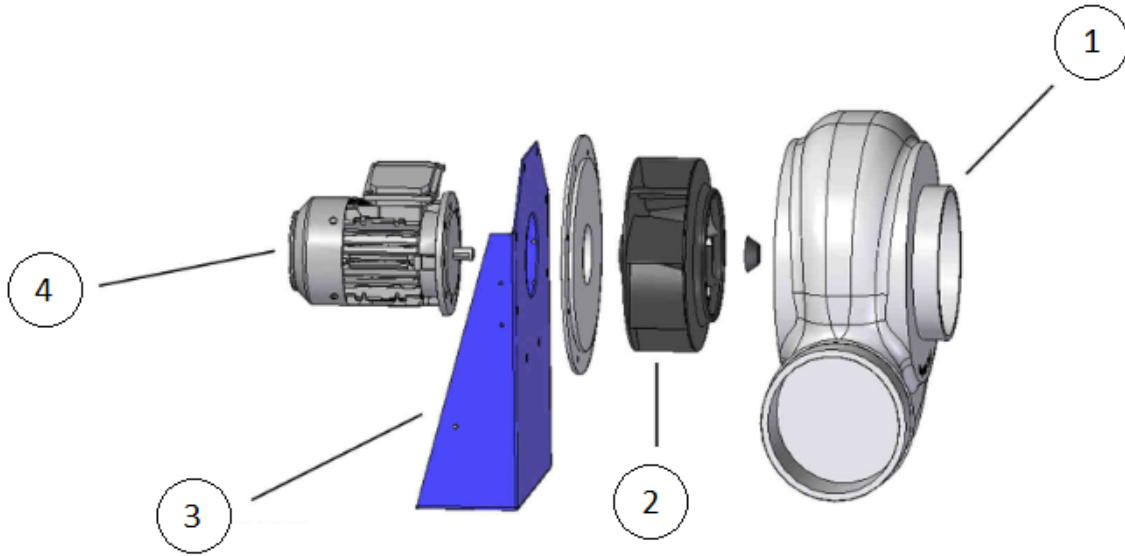


**FREQUENCY SPEED CONTROLLER  
SFC 400 III 1,2A \***  
REF: SFC400III1



**ANTI-VIBRATION SPRING BLOCK  
AVS (GENERIC)**

**SPARE PARTS**



	Code	Model	Qty
1	T03102014	IMPELLER MBPCX 20 T2 0,25 kW LG	x1